

140 University Hall Audio/Visual Instructions

Wired Connections – HDMI with Adapter Options

(*Adapter options include Display Port, Mini-Display Port, & VGA with USB Audio)

HDMI - Connect with an HDMI cable

- Turn on system by selecting Display Power on the wall-mounted control panel.
- Select HDMI as your input source.
- Use the HDMI cable provided in the room. The cable will be connected to HDMI wall-port or hanging next to the port beneath the control panel.
- Use the other end of the HDMI cable to connect to the corresponding HDMI port on your computer.
- Use the display options on your computer to choose how your screen will be displayed on the monitors.
- Choose from Display options, which may include Duplicate/Mirror or Extend.



Adapter Options for HDMI - Connect with an Adapter using the HDMI cable

- Turn on system by selecting Display Power on the wall-mounted control panel.
- Select HDMI as your input source.
- Use the HDMI cable provided in the room. The cable will be connected to HDMI wall-port or hanging next to the port beneath the control panel.
- Use the other end of the HDMI cable to connect to the appropriate Adapter and then connect to the corresponding port on your computer. (See Adapter Images below)
- Use the display options on your computer to choose how your screen will be displayed on the monitors.
- Choose from Display options, which may include Duplicate/Mirror or Extend.

Adapter Options for HDMI

Display Port



Mini-Display Port



VGA with USB Audio




140 University Hall Audio/Visual Instructions

Wireless Connections – Apple



Apple TV - Connect with an iPad or iPhone (iOS Device)

- Turn on system by selecting Display Power.
- Select Apple TV as your input source.
- Confirm that your device is connected to the “osuwireless” network.
- On your iOS device, swipe up from the bottom of your screen to access the Control Center.
- Tap AirPlay.
- Tap the name of the device you want to stream content to (UH156 Apple TV). You'll see an icon of a TV screen. 
- Turn on Mirroring. On the iPad Mini, you might need to scroll to see the mirror option.
- Confirm your device is displayed on the screen.

Apple TV - Connect with an Apple computer

- Turn on system by selecting Display Power.
- Select Apple TV as your input source.
- Confirm that your device is connected to the “osuwireless” network.
- Click the AirPlay icon in the menu bar, and then choose the name of the Apple TV (UH156 Apple TV) under "Connect to AirPlay Display." The icon is blue when your Mac is using an AirPlay display.
- Or use Displays preferences: Choose Apple menu > System Preferences, click Displays, then choose the Apple TV (UH156 Apple TV) from the AirPlay Display menu at the bottom of the window.

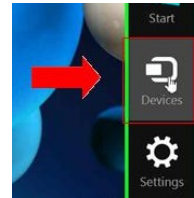


140 University Hall Audio/Visual Instructions

Wireless Connections – Windows & Android



Push2TV - Connect with a computer running Windows 8.1 or higher. (Wireless connections are not available for earlier Windows operating systems)



- Turn on system by selecting Display Power.
- Select Push2TV as your input source.
- Confirm that your device is connected to the “osuwireless” network.
- To add a device for the first time, go to Settings>Devices>Connected Devices>Add Device.
- To connect to the device that has already been added, swipe in from the right edge of the screen, and then tap Devices (Windows 10, tap “Connect”). (If you're using a mouse, point to the lower-right corner of the screen, move the mouse pointer up, and then click Devices.)
- Tap or click Project, and then tap or click Add a Wireless Display.
- Choose the wireless display in the list of devices found, and follow the instructions on the screen.

Push2TV - Connect with an Android device (instruction may vary across devices: follow instructions on screen)



- Turn on system by selecting Display Power.
- Select Push2TV as your input source.
- Go to Settings and then select More Settings/Extended Settings.
- Select Screen Mirroring or Media Output (varies by device).
- Available devices will be listed.
- Under Available Devices, tap the Push2TV device shown and wait for the connection to be confirmed.

